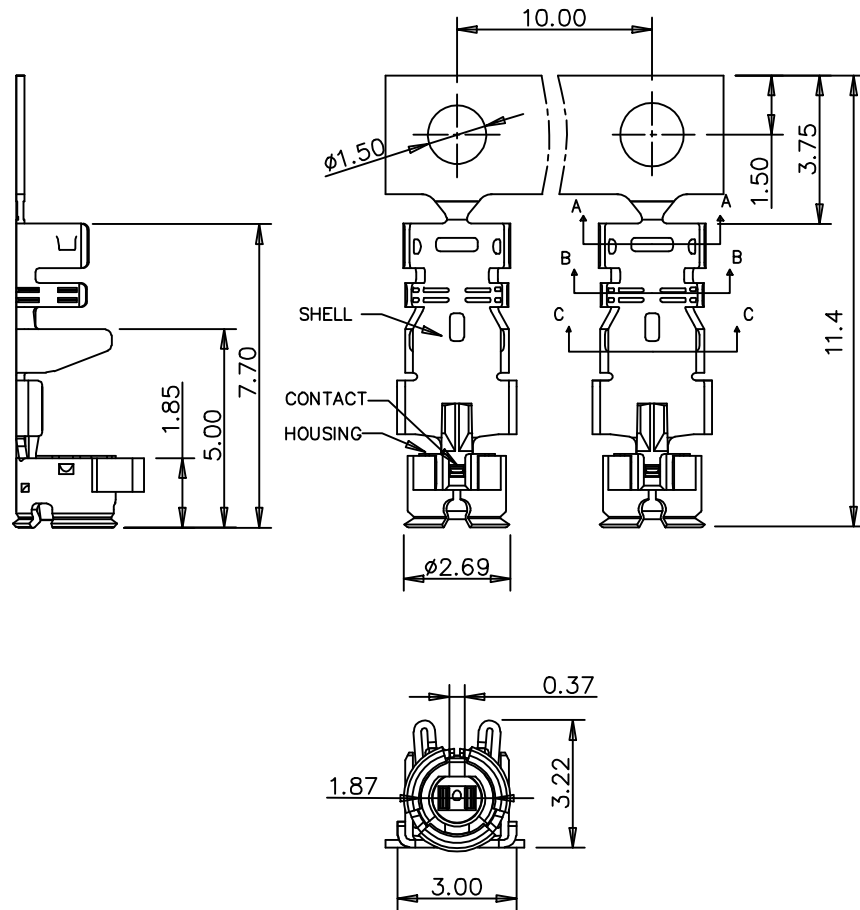


非汽车件

变更目的	变更内容	修改人	修改日期	客户版本	内部版本
新产品	新增品	陈洪	2011.0.11	A	AD



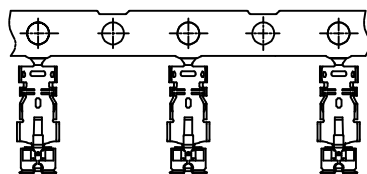
NOTES:

- VOLTAGE RATING: 60V AC/DC
- CURRENT VS. TEP. RISE: 0.3A AC/DC, 30 C RISE Max;
- INSULATION RESISTANCE: 500 MEGOHMS Min.
- DIELECTRIC WITHSTANDING VOLTAGE : 200V AC/Minute
- VSWR : 1.5Max AT 6GHz
- MATING FORCE AND UNMATING FORCE,SEE ITEM
- MATING FORCE: 3.5Kgf Max,UNMATING FORCE: 0.5Kgf Min
- DURABILITY: 30 TIMES.
- CABLE RETENTION FORCE: 2.0Kgf MIN.

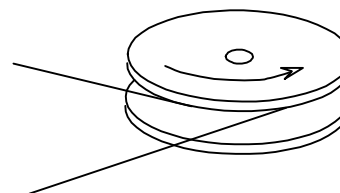
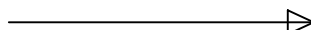
3	SHELL	COPPER ALLOY	GOLD PLATED OVER NI
2	CONTACT	COPPER ALLOY	GOLD PLATED OVER NI
1	HOUSING	PA66	UL94-0
NO	NAME	MATERIAL	DESCRIPTION

UNITS: mm		PART NO.:	昆山康领电子科技有限公司 Kunshan Longfeng Electronics Technology Co., Ltd.						
X ±	X' ±	KS-MHF-37-N-01							
.X ± 0.2	.X' ±	APPD:	DWG NO.:						
.XX ± 0.10	.XX' ±	CHKD:	MHF-37-N-01						
.XXX ±	.XXX' ±	DR: Jesen	<table border="1"> <tr> <td>SCALE</td> <td>SHEET</td> <td>REV.</td> </tr> <tr> <td>NONE</td> <td>1/2</td> <td>A0</td> </tr> </table>	SCALE	SHEET	REV.	NONE	1/2	A0
SCALE	SHEET	REV.							
NONE	1/2	A0							

非汽车件



PACKAGE DIRECTION



NOTES:

1. PERFORMANCE

1-1. ELECTRICAL CHARACTERISTICS;

- 1-1-1.VOLTAGE RATING: 60V AC/DC
- 1-1-2.CURRENT VS. TEP. RISE: 0.3A AC/DC,30°C RISE Max;
- 1-1-3.CONTACT RESISTANCE : INITIAL 20 MILLIOHMS Max;
AFTER ENVIRONMENTAL : 25 MILLIOHMS Max;
- 1-1-4.INSULATION RESISTANCE: 500 MEGOHMS Min.
- 1-1-5.DIELECTRIC WITHSTANDING VOLTAGE : 200V AC/Minute
- 1-1-6.VSWR : 1.5Max AT 6GHz

1-2. MECHANICAL CHARACTERISTICS;:

- 1-2-1.MATING FORCE AND UNMATING FORCE,SEE ITEM
MATING FORCE: 3.5Kgf Max.
UNMATING FORCE: 0.5Kgf Min.
- 1-2-2.DURABILITY: 30 TIMES


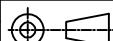
1-3. ENVIRONMENT CHARACTERISTICS;

- 1-3-1.OPERATING TEMPERATURE : -30°C TO +80°C;
- 1-3-2.STORAGE TEMPERATURE : -45°C TO +85°C;

2. CABLE RETENTION FORCE:2.0Kgf Min

3. HARMFUL MATERIAL CONTROL PLEASE FOLLOW RoHS COMPLIANT.

3	SHELL	COPPER ALLOY	GOLD PLATED OVER NI
2	CONTACT	COPPER ALLOY	GOLD PLATED OVER NI
1	HOUSING	PA66	UL94-0
NO	NAME	MATERIAL	DESCRIPTION

UNITS: mm		PART NO.:	 昆山康硕电子科技有限公司 Suzhou Sunline Electronics Technology Co., Ltd.						
X.±	X°±	KS-MHF-37-N-01							
.X±0.2	.X°±	APPD:	DWG NO.:						
.XX±0.10	.XX°±	CHKD:	MHF-37-N-01						
.XXX±	.XXX°±	DR: Jesen	 <table border="1"> <tr> <td>SCALE</td> <td>SHEET</td> <td>REV.</td> </tr> <tr> <td>NONE</td> <td>2/2</td> <td>A0</td> </tr> </table>	SCALE	SHEET	REV.	NONE	2/2	A0
SCALE	SHEET	REV.							
NONE	2/2	A0							